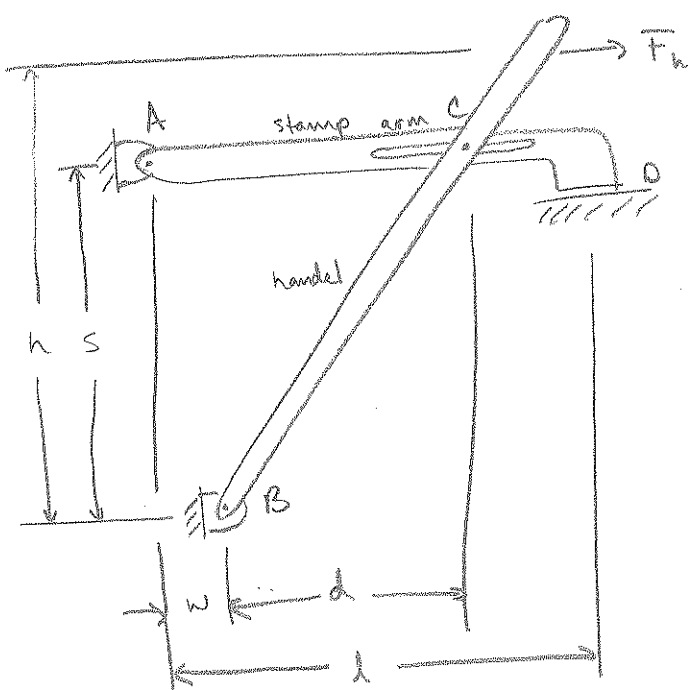
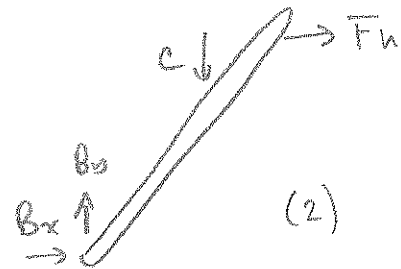
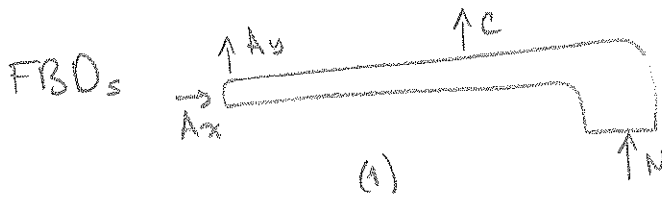


6.3.2)



Find vertical force  $N$  that the stamp arm exerts on the surface at  $D$



using FBD 1

$$\sum M_B = -Cd - F_h h = 0$$

$$C = -\frac{F_h h}{d}$$

using FBD 2

$$\sum M_A = C(d+w) + Nl = 0$$

$$N = -\frac{C(d+w)}{l}$$

$$N = \frac{h(d+w)}{dl} F_h$$