

Homework #4 Comments

— Overall quite well done.

Main Problems :

⇒ Many students did not indicate whether the bar forces are compressive or tensile forces

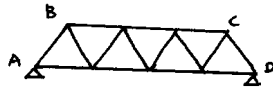
— this is a must !!!

— either use signs (specify whether +ve means comp./tensile etc) or just write C/T.

⇒ A couple of you started the analysis of the trusses from the middle bar

— is ok for this homework set, since the structures are symmetrical

— but better to start from the edge !



i.e. either node A or D as starting point

⇒ please find all reaction forces on entire structure BEFORE commencing on the analysis of bar forces !

— this will prevent you from leaving these external reaction forces out in the analysis